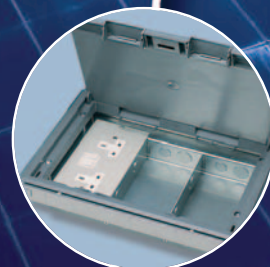


Marshall-Tufflex

Cable Management for the future

CI/SfB
(62) In6



www.marshall-tufflex.com



About Marshall-Tufflex

Marshall-Tufflex is the UK's market leading manufacturer of cable management products with over 65 years experience in the industry. The company is British-based and operates with a high degree of integrity and a strong business ethos. Today, Marshall-Tufflex is a globally operating company in the electrical industry who consistently pioneers new products. Our priority is to continue investing in the research that provides effective future solutions for a fast moving market.

Products In Stock

Extensive stockholdings via a large network of national and independent wholesalers gives excellent availability throughout the UK. Meanwhile, our distributors across the world have full access to our range and maintain their own local stocks.

Excellent Customer Service

Our network of sales engineers supported by our Customer Service team provide technical assistance and access to stock availability, lead times and delivery schedules.

Technical Support

Our Technical Team are experienced electricians and electrical engineers who can advise on a wide range of solutions and technical issues such as the latest wiring regulations, product standards, EMI shielding, data cabling control and Parts L and M compliancy. Contact them on +44 (0) 1424 856688.

Highest Quality Products

We pride ourselves in offering durable and reliable products - Marshall-Tufflex is recognised by the British Standards Institution as a firm Assessed Capability to BS EN 9001:2008.

New Products and Innovation

Installation practices, standards and building designs continue to evolve. To meet these demands we are constantly pioneering new products that are sustainable, environmentally friendly and can reduce installation times.



Environmental & Sustainable



Marshall-Tufflex actively pursues a comprehensive programme to develop formulations based on environmentally acceptable materials, whilst still maintaining and, where possible, improving on long-term performance properties.

Jim Fletcher, Managing Director

MARSHALL-TUFFLEX AND VINYL 2010

Marshall-Tufflex is dedicated to meeting the requirements of Vinyl 2010 and its Voluntary Commitment to the European Commission. www.vinyl2010.org



RECYCLING

Marshall-Tufflex is active in and financially supports various industry bodies in driving the industry forward in the use and control of PVC-based materials, with the aim of increasing awareness and use of recycled material.



Carbon assessment

The Carbon Trust was set up by Government in 2001 as an independent company. Their mission is to accelerate the move to a low carbon economy by working with organisations to reduce carbon emissions and develop commercial low carbon technologies. Marshall-Tufflex was assessed by the Carbon Trust in 2007 and received an excellent report.



Certificate No. Q05393
Registration
BS EN ISO 9001:2008

Quality Management Systems:

Marshall-Tufflex is totally committed to quality and customer satisfaction and the Company is recognised by the British Standards Institution as a firm of Assessed Capability to BS EN ISO 9001:2008.



Certificate No. EMS 539245
Registration
BS EN ISO 14001:2004

Environmental Management Systems:

Marshall-Tufflex is totally committed to achieving high environmental standards and is recognised by the BSI as a firm of Assessed Capability to BS EN ISO 14001:2004.

Cable Management Solutions

Marshall-Tufflex manufacture and supply a comprehensive range of cable management and power distribution systems for commercial, healthcare, education and industrial markets.



Floor Box Distribution Unit



Interlocking GRP Tray for aggressive environments

Our large range of products includes trunking systems in PVC (with optional antimicrobial properties), steel and aluminium, GRP tray and ladder systems, complete Underfloor to Desk Solutions, PowerPoles and Posts. Marshall-Tufflex products also provide options for LSOH, EMC, Cat 6 and Part M compliancy.

Pioneered by Marshall-Tufflex, MT32 is a pre-wired 32Amp power connection system designed to reduce installation time and cost. MT32 is available for both perimeter trunking and underfloor installations and can easily be incorporated into your design. Lighting and home run products are particularly beneficial for projects utilising pre-fabricated modular wiring solutions.

Our products meet the highest technical standards and bespoke solutions can be designed specifically to meet individual requirements.

Contents	page
PVC-U Perimeter Trunking Systems	4-5
Cat 6 Compliant Trunking	4
Screening for Data Systems	4
Part M Compliance for Visual Impairment	4
Antimicrobial Trunking Systems	5
MT32 Power Connection System	6
Underfloor to Desk Solutions	7
Aluminium Trunking Systems	8
Steel Trunking Systems	8
PowerPoles and Posts	8
GRP Cable Management Systems	9
MT Supertube LSOH Conduit	9
SnakeWay – Steel Support System	9
Special Solutions	10-11



Trunking systems available in PVC-U, steel and aluminium



Coloured accessory boxes to comply with Part M of the UK building regulations



Cat 6 compliant trunking systems



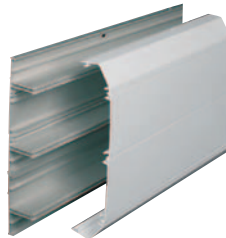
Powerposts and Poles for the management of services to island workstations

PVC-U Perimeter Trunking Systems

PVC-U perimeter trunking systems are an ideal solution for the transportation of data, communication and power cabling. Containment systems for dado, skirting and bench applications are available in a wide range of sizes, colours and finishes.



Sterling Profile 1



Sterling Profile 11

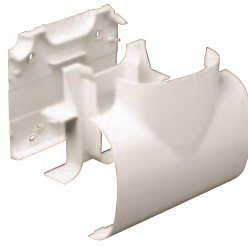


Perimeter Trunking with Electromagnetic Shielding installed within The Diamond Synchrotron, Oxfordshire.

Cat 6 Compliant Trunking

Future-proofing installations by installing Cat 6 compliant trunking is a major consideration where networks need to handle large volumes of devices and information.

To support Cat 6 data installations, Sterling trunking has a bend radius of 50mm and Odyssey trunking has a bend radius of 25mm.



3 Part tee for full cable segregation and Cat 6 compliance



Twin Plus Trunking installed into the University of Plymouth

Screening for Data

Electromagnetic screening is a conductive spray coating that assists in providing protection from electromagnetic interference. Providing excellent long term performance, there is no reduction in cable capacity per cross section area of trunking.

Sterling Profile 2 with electromagnetic shielding in compartments 1 and 3



PART M Compliance

To comply with Part M of the UK Building Regulations for visual impairment, coloured accessory boxes are available to give a contrast against white trunking and standard plate accessories.

Blue accessory boxes installed within trunking at Old Swinford Hospital School

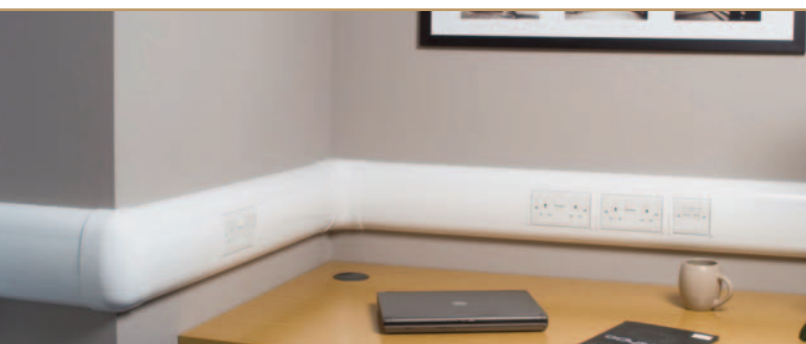
PVC-U PERIMETER TRUNKING SYSTEMS ARE INSTALLED AT

- Mercedes-Benz UK
- London Borough of Harrow
- The Egyptian Museum, Cairo
- The Ministry of Defence
- Crowne Plaza Hotels
- Queen Mary University Laboratories
- Dubai Central Police Headquarters, UAE
- Diamond Synchrotron, Oxfordshire
- The University of Plymouth
- Queens Hospital, Romford
- Federal Treasury of Russia
- Financial Institutions, Schools & Universities throughout the UK
- Larnaca International Airport Cyprus

Odyssey Trunking

Odyssey has a completely curved contemporary profile, designed to enhance the look of a room. Accessories are flush with the cover to maintain a smooth profile and integrated back boxes can be Part M compliant.

- Curved profile avoids clutter and dust collecting.
- Part M compliance with coloured accessory boxes.
- Cat 6 compliant fittings.
- EMI screening available.
- Innovative increased retention and security feature for covers and fittings.



INSTALLED AT

- Oxford University
- The Keenan Consultancy, Edinburgh
- Lawster House, Dorking
- Leigh Primary Care Trust
- Enterprise Centre, Leamington
- Old Swinford School, Stourbridge
- Staffordshire University
- Dublin Airport



Antimicrobial Trunking Solutions

Where hygiene is a priority, we can now offer most Trunking Systems with antimicrobial properties that prevent 99.9% of harmful bacteria growth.

The special bio formulation is integral to the PVC-U material and as a result there is no reduction in effectiveness, even if scratched or damaged.

- Antimicrobial properties inherently formulated into PVC-U.
- Prevention of harmful bacteria growth, such as MRSA, Klebsiella Pneumoniae, E-coli, Pseudomonas Aeruginosa, Salmonella and Streptococci.
- A durable, non-leaching antimicrobial treatment.
- Testing to ISO 22196:2007.
- Registration with the Environmental Protection Agency (EPA).
- Compliance with the European Biocidal Products Directive (BPD).



Odyssey Bio was used within eleven operating theatres at Derriford Hospital, Plymouth, UK. Antimicrobial trunking has also been installed into Altadore Nursing Home, Dublin and Heavitree Hospital, Exeter, UK.



MT32 Pre-fabricated Wiring Systems The future for electrical installation

MT32
CONNECTING POWER

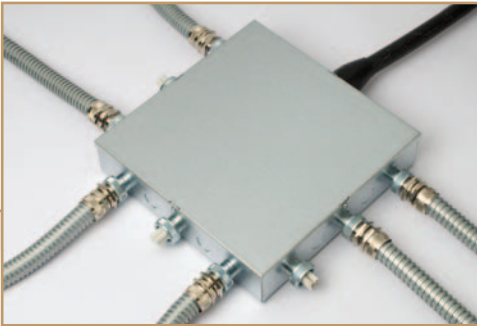
MT32 is a revolutionary 32Amp pre-wired and pre-tested power connection system, designed to allow fast-track installation of complete cabling runs from power source to the final accessory, outlet or application.

- 3 and 4 pole 32amp connectors which simply click together without tools.
- Provides faster completion times and lower project costs.
- Systems available for perimeter trunking, underfloor distribution, dry lining/surface mount applications, lighting systems and main distribution board home runs.
- Zero Waste - Using MT32 means no wasted materials when compared to traditionally wired projects as the products do not require any cutting or stripping and can be ordered to the required length. The system is also completely re-usable with in-built future-proofing.
- Zero Harm - MT32 products are pre-tested and include keyed connectors that guarantee correct polarity. By eliminating the need for traditional wiring tools the chance of personal injury is reduced to a minimum.
- No onsite cable preparation and termination needed – only final circuit testing is required.

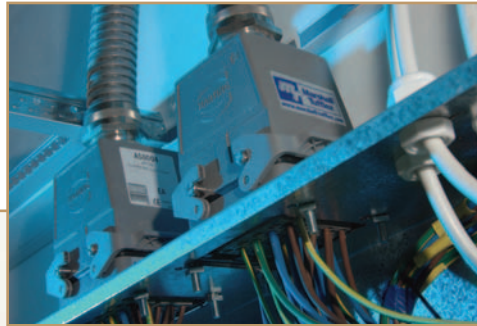


INSTALLED AT

- Hidden Hearing outlets throughout the UK
- Byne Headquarters, Surrey
- Capgemini UK, London
- Sanderson Shopping Arcade, Morpeth, Northumberland
- St Aloysius School Sports Hall and Gymnasium
- Bristol Royal Infirmary
- Freeman Hospital, Newcastle



MT32 Master Distribution Unit provides 9-way distribution of power under the floor



MT32 Home Run taking power and lighting cabling from the main distribution board to a mastering unit



MT32 pre-wired sockets and interconnecting cables installed in perimeter trunking

Underfloor to Desk Solutions

Time and cost effective energy distribution systems that provide a fast and flexible interface between floor services and the office environment.

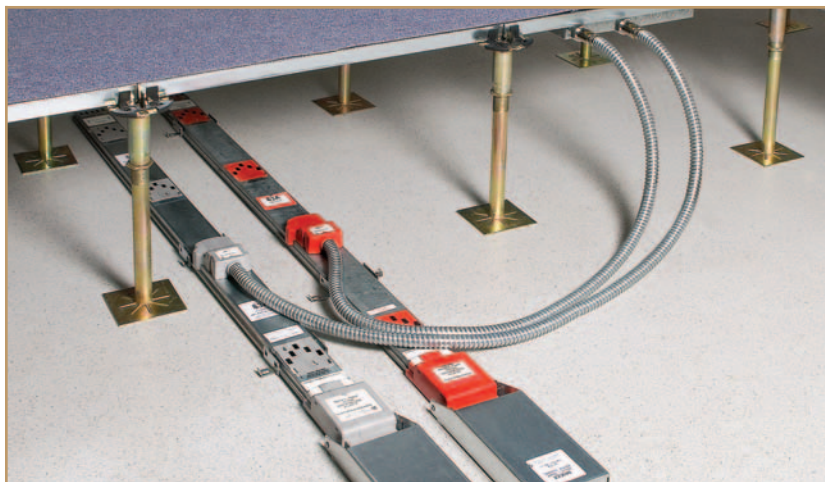
- 50 or 63amp powertrack system in five colour co-ordinated versions.
- 3 and 4 compartment raised floor boxes, power grommets and through grommets.
- In-screed Flooring System.

INSTALLED AT

- Caterpillar UK
- Ceridigion County Council Offices
- Livingston Football Club, Scotland
- Hatton Garden, London
- Pret A Manger, London
- BP North America, Houston, Texas



Raised floor and in-screed service outlet boxes



Standard and CE Powertrack

- Pre-wired desk modules with various switching and fusing options to meet all power and data requirements.
- MT32 Underfloor Distribution System – click together modular units with 32 amp power connectors are pre-wired and tested for fast on site installation.



Interconnecting MT32 pre-wired and assembled floor boxes



The complete solution from SWA infeed. MT32 Underfloor pre-wired plug and play system feeds desk modules via an MT32 Master Distribution Unit and Floor Box

Aluminium Trunking Systems

Aluminium trunking systems are ideal for commercial, industrial, workshop and laboratory use. Manufactured from high precision extruded aluminium they are available with a white or silver grey powder coating.

INSTALLED AT

- Radisson Hotel, Stansted Airport
- Mercedes-Benz UK
- Tullow Oil Headquarters, Uganda
- University of Manchester
- Cambridge Science Park
- Pfizer UK
- The Bank of Tanzania Headquarters, Dar es Salaam



- Comprehensive range of sizes and profiles.
- Individual covers for each compartment.
- Additional colours available, subject to minimum order quantities.

- Offers first class EMC/EMI screening performance.
- Systems specified with polycarbonate fittings will meet accepted requirements for LSOH specification.

Steel Trunking Systems

Steel trunking systems combine mechanical strength with style.

- Cover snaps into body, automatically, establishing earth continuity.
- Manufactured from pre-galvanised steel.
- Polyester powder coated for a superior finish.
- Dividing fillet to sub-divide into three compartments.
- Neat finish achieved by use of friction fit components (ie. without visible screws).



INSTALLED AT

- Marylebone Station, London
- Stanex, Stansted Airport
- Heathrow Airport

PowerPoles and Posts

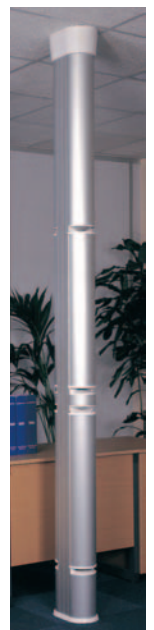
PowerPoles and Posts are an elegant and practical solution for the management of power, data and communication services to island work stations.

- Single and double sided versions available.
- PowerPosts fit neatly under a standard desktop.
- PowerPoles are suitable for suspended and solid ceiling applications.
- Optional key operated locks fitted to hinged lids for added security.
- Available with or without hinged covers.
- Segregated for power and data services.

Series 2 Double Sided PowerPost with hinged cover

INSTALLED AT

- Johnson & Johnson Ltd
- Oxford University
- Google Offices, St. Petersburg
- Moscow Domodedovo International Airport



Series 2 PowerPoles

GRP Cable Management Systems

GRP cable management systems are designed for aggressive environments, such as extreme weather or high temperatures. The systems are extremely robust, considerably lighter than aluminium or steel, and have excellent resistance against fire and corrosion resulting in a very long life span.

- Range includes, trays, ladders, ground ducts and troughing.
- Large cable capacity.
- No need for painting means low maintenance costs.
- Self extinguishing, without toxic fumes.
- Zero Halogen.
- Resistant to temperatures from -80° to +130°.
- Excellent cable protection.



MT Supertube LSOH Conduit

MT Supertube is a three-layer, heavy gauge, impact-resistant conduit giving excellent EMI capabilities. Available with steel or polycarbonate fittings, MT Supertube is manufactured to comply with BS EN 50086.

- LSOH Polyethylene-coated aluminium.
- Can be formed by hand and no bending spring is required.
- No special tools necessary.
- MT Supertube FR Plus version is fire tested in accordance with, and meets criteria for, Category 'EQ/I' of the London Underground Limited Engineering Standard 2-01001-002:Issue A1:December 2003.

INSTALLED AT

- The Royal Bank of Scotland
- NHS Hospitals throughout the UK and Ireland
- Mid Kent College
- Great Southern Hotels
- City of Manchester Stadium
- Emirates Stadium
- Barts and The London NHS Trust
- Dublin Airport Terminal 2
- National Sports Injury Clinic, Dublin
- PricewaterhouseCoopers, Dublin

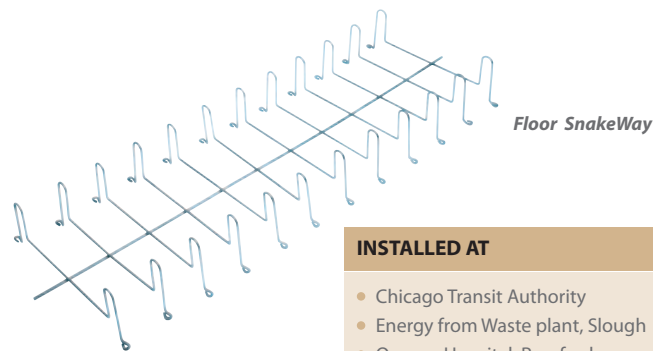


The Royal Victoria Hospital, Belfast

SnakeWay Wire Support System for Cabling

SnakeWay is a steel support system that can be bent to shape by hand, thus allowing very fast installation and huge time and labour savings.

Wall SnakeWay



Floor SnakeWay

INSTALLED AT

- Chicago Transit Authority
- Energy from Waste plant, Slough
- Queens Hospital, Romford
- London Underground

- Suitable for suspended, wall or floor applications.
- Offers up to 85% saving in installation time when compared to other tray/basket systems.
- Single point support fixing.
- Side entry cable loading.
- No additional support fixings required.

Special Solutions

Marshall-Tufflex offer a special solutions service and work with clients, architects, design teams and contractors to understand their requirements and provide solutions that add value as well as meeting individual project needs.

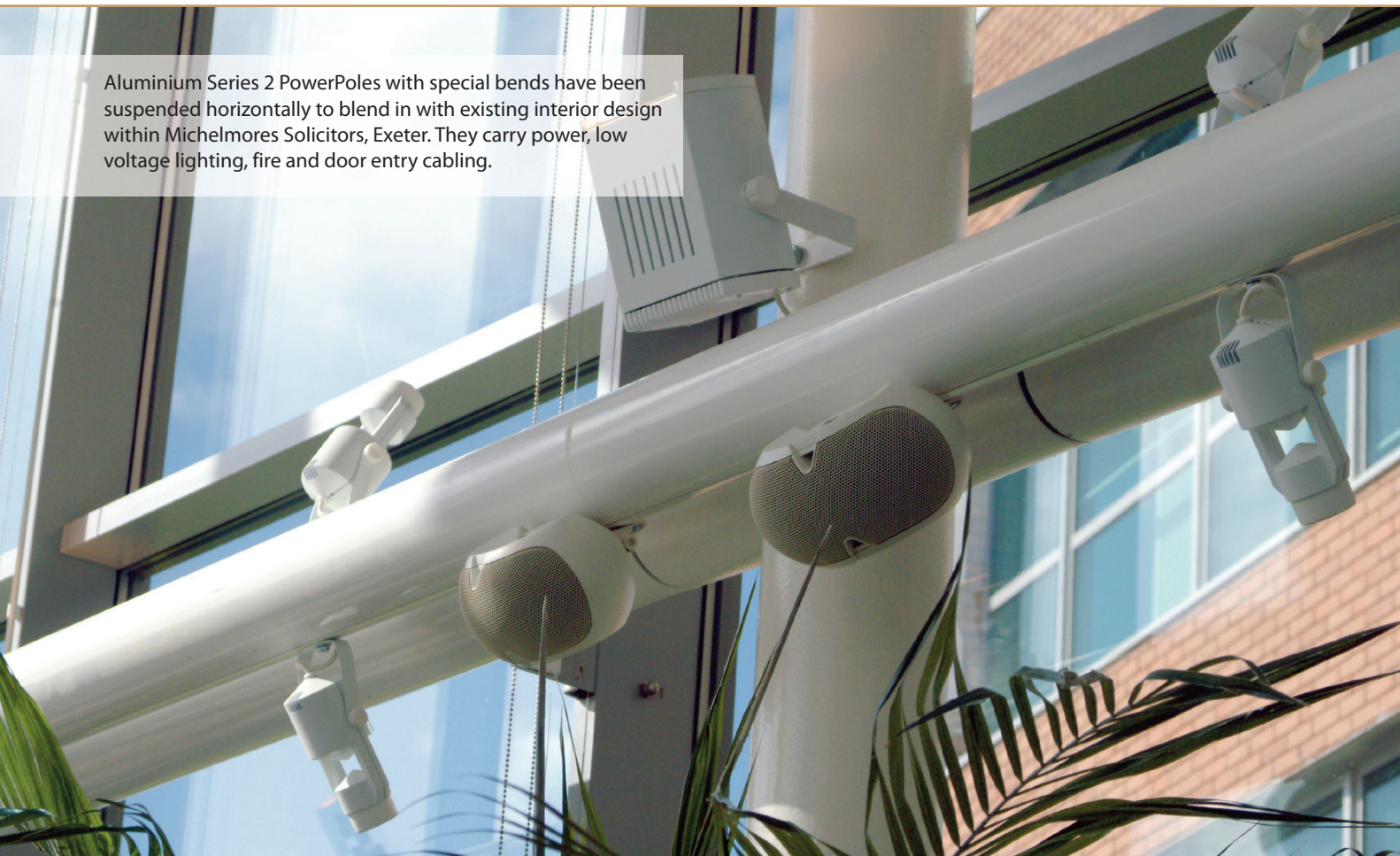
Increasingly, clients find it far more cost-effective for Marshall-Tufflex to create factory finished power and data distribution systems, that are pre-wired and tested, and completely ready for installation, rather than using a highly qualified electrician or technician to fabricate and install on-site.

Marshall-Tufflex also offer tailor-made solutions to meet demanding contemporary and sustainable design criteria in terms of size, application, colour, finish and functionality. These solutions are aesthetically pleasing, minimise waste and reduce total project costs.

To discuss your requirements for specialised cable management solutions, please contact our Technical Department on +44 (0) 1424 856688.



Aluminium Series 2 PowerPoles with special bends have been suspended horizontally to blend in with existing interior design within Michelmores Solicitors, Exeter. They carry power, low voltage lighting, fire and door entry cabling.



Floor Boxes for Terminal 5, Heathrow Airport, London

Heavy duty stainless steel floor boxes delivering access to data and power supply systems are installed into London Heathrow Terminal 5.

Hundreds of the IP rated and load tested access units with flush lids are built neatly and safely into the subfloor. In addition, XL aluminum trunking, a large capacity dado containment system, is installed in the shops and offices of T5's retail and commercial areas.



Powerposts and Powerpoles for St James's Hospital, Ireland

PowerPosts were modified and suspended from the ceiling within the Irish Blood Bank's laboratory at St. James's Hospital. PowerPoles were specially divided by using clip-in fillets to allow services such as power and water to remain segregated whilst being accommodated within the same pole. All in all, a versatile solution designed to overcome the problems faced by the Irish Blood Bank.



Curved Trunking Solution for Tretherras School, Newquay, UK

A curved cable management solution was created for Tretherras School in Newquay to wrap around the central workstation of their IT department. Sterling Profile 1 (a multi-compartment PVC-U perimeter trunking system) was pre-curved to specification in order to achieve the architect's vision.



Pre-wired Docking Station for Marks and Spencer, UK

Marshall-Tufflex worked closely with Marks and Spencer to design a pre-wired wall mounted docking station for re-charging staff communication handsets in their stores throughout the UK.

The system delivers power to a large number of chargers and allows staff to quickly and easily locate handsets. The racks are constructed from impact resistant PVC-U Maxi Trunking and also contain unsightly and potentially hazardous wires and leads.



Special Power Distribution units for the BBC, London

Marshall-Tufflex were called upon to supply power distribution units for the BBC's transmission centres as part of the preparation for UK TV's switch to digital.

With rigid timescales in place and the need to exceed deadlines, Marshall-Tufflex's complete offsite pre-fabrication and pre-wiring capability saved valuable time. The over-head power distribution system was constructed from a combination of PVC-U Maxi-trunking and Mono 10 with specialised industrial sockets.



Marshall-Tufflex Ltd

Churchfields Industrial Estate
Hastings, East Sussex TN38 9PU
United Kingdom

Telephone: 01424 856600

Fax: 01424 856611

International Tel: +44 (0)1424 856000

International Fax: +44 (0)1424 856666

Email: sales@marshall-tufflex.com

Web: www.marshall-tufflex.com

Technical Hotline: +44 (0)1424 856688

Republic of Ireland & Northern Ireland distributor

Core Electrical Ltd
17b Goldenbridge Industrial Estate
Tyrconnell Road, Inchicore
Dublin 8

Telephone: +353 (0)1453 7033

Fax: +353 (0)1453 8911

In pursuance of our policy of continued product improvement Marshall-Tufflex reserve the right to change the design or specification of its products without notification.

EL85/08049

www.marshall-tufflex.com

