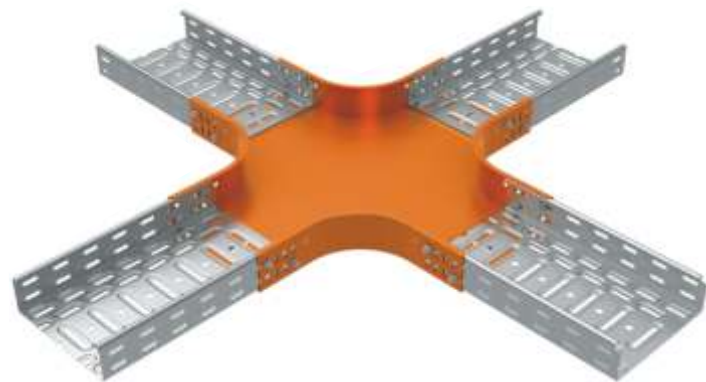
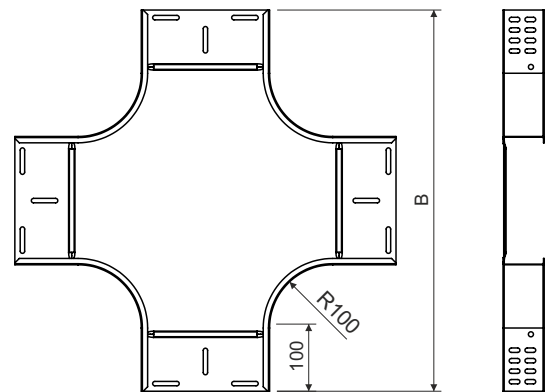
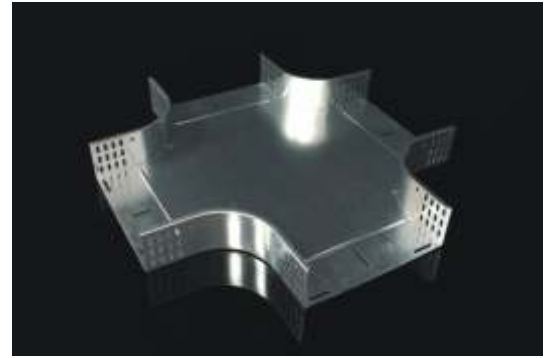


cross-over

type number	for width of cable tray	for height of cable tray	B	thickness of metal sheet
KR 35X50	50	35	450	0,8
KR 35X75	75	35	475	0,8
KR 35X100	100	35	500	0,8
KR 35X150	150	35	550	0,8
KR 35X200	200	35	600	1,0
KR 35X300	300	35	700	1,0
KR 35X400	400	35	800	1,0
KR 35X500	500	35	900	1,0
KR 35X600	600	35	1000	1,0
KR 60X50	50	60	450	0,8
KR 60X75	75	60	475	0,8
KR 60X100	100	60	500	0,8
KR 60X150	150	60	550	0,8
KR 60X200	200	60	600	1,0
KR 60X300	300	60	700	1,0
KR 60X400	400	60	800	1,0
KR 60X500	500	60	900	1,0
KR 60X600	600	60	1000	1,2
KR 85X100	100	85	500	0,8
KR 85X150	150	85	550	0,8
KR 85X200	200	85	600	1,0
KR 85X300	300	85	700	1,0
KR 85X400	400	85	800	1,0
KR 85X500	500	85	900	1,0
KR 85X600	600	85	1000	1,2
KR 110X150	150	110	550	0,8
KR 110X200	200	110	600	1,0
KR 110X300	300	110	700	1,0
KR 110X400	400	110	800	1,0
KR 110X500	500	110	900	1,0
KR 110X600	600	110	1000	1,2



product description: The cross-over is used to connect cable trays that cross over on one level running through JUPITER cable trays or cable ladders of the same width.

To fix the connection use the bolt NSM 6X10. To protect the cables, the bolt head is inside the cable tray.

A bolt with a GMT surface finish is used for a tray with an F surface finish.

The cross-over may be supplied in polyester varnish (varnish layer 60, 100 µm).

configuration: S - Pre-Galvanized, zinc-layer 15 - 27 µm
 F - Hot Dip Galvanized, zinc-layer 50 - 100 µm
 EO - epoxy coating for indoor environment, along the perimeter, 60 µm
 EC - epoxy coating for indoor environment, - total paint, 60 µm

sales amount: á 1 pc

certification: EN 61537:02

storage: EN 60721-3-1