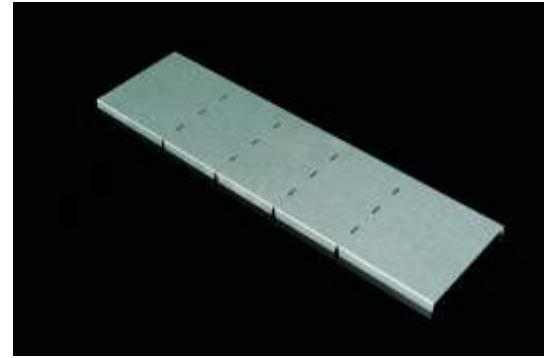
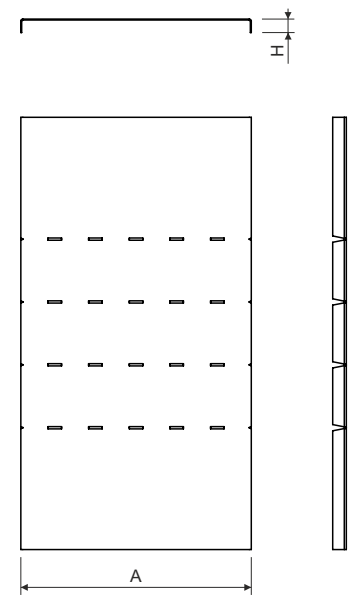


low elbow 90° cover



item number	A	H	thickness of metal sheet
VKO 90X35X50	54	12	0,6
VKO 90X35X75	79	12	0,6
VKO 90X35X100	104	12	0,6
VKO 90X35X150	154	12	0,6
VKO 90X35X200	204	12	0,8
VKO 90X35X300	305	12	1,0
VKO 90X35X400	405	15	1,0
VKO 90X35X500	505	15	1,0
VKO 90X35X600	605	15	1,0
VKO 90X60X50	54	12	0,6
VKO 90X60X75	79	12	0,6
VKO 90X60X100	104	12	0,6
VKO 90X60X150	154	12	0,6
VKO 90X60X200	204	12	0,8
VKO 90X60X300	305	12	1,0
VKO 90X60X400	405	15	1,0
VKO 90X60X500	505	15	1,0
VKO 90X60X600	605	15	1,0
VKO 90X85X100	104	12	0,6
VKO 90X85X150	154	12	0,6
VKO 90X85X200	204	12	0,8
VKO 90X85X300	305	12	1,0
VKO 90X85X400	405	15	1,0
VKO 90X85X500	505	15	1,0
VKO 90X85X600	605	15	1,0
VKO 90X110X150	154	12	0,6
VKO 90X110X200	204	12	0,8
VKO 90X110X300	305	12	1,0
VKO 90X110X400	405	15	1,0
VKO 90X110X500	505	15	1,0
VKO 90X110X600	605	15	1,0



product description: This cover is used to cover the low elbow KO.

To fix the cover use cover fixtures VU.

The covers are supplied straight. They are constructed from a single piece of sheet metal with pre-cut sidewalls for subsequent bending during installation.

The cover may be supplied in polyester varnish (varnish layer 60, 100 µm).

configuration: S - Pre-Galvanized, zinc-layer 15 - 27 µm
 F - Hot Dip Galvanized, zinc-layer 50 - 100 µm
 EO - epoxy coating for indoor environment, along the perimeter, 60 µm
 EC - epoxy coating for indoor environment, - total paint, 60 µm

sales amount: á 1 pc

certification: EN 61537:02

storage: EN 60721-3-1