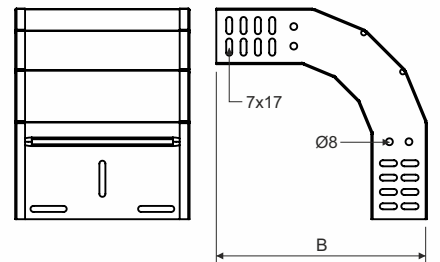
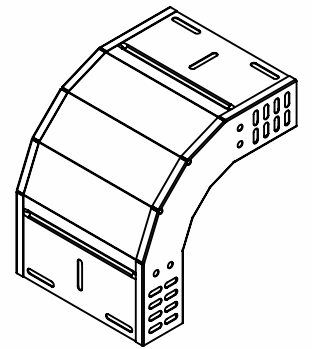


type number		for width of cable tray	for height of cable tray	B	thickness of metal sheet	weight		amount of bolts for connection
						_S	_F	
SO 90X35X50_S	SO 90X35X50_F	35	50	220	0,8	0,37	0,43	8
SO 90X35X75_S	SO 90X35X75_F	35	75	220	0,8	0,43	0,50	8
SO 90X35X100_S	SO 90X35X100_F	35	100	220	0,8	0,49	0,57	8
SO 90X35X150_S	SO 90X35X150_F	35	150	220	0,8	0,59	0,69	8
SO 90X35X200_S	SO 90X35X200_F	35	200	220	1,0	0,85	0,98	10
SO 90X35X300_S	SO 90X35X300_F	35	300	220	1,0	1,10	1,28	10
SO 90X35X400_S	SO 90X35X400_F	35	400	220	1,0	1,39	1,61	12
SO 90X35X500_S	SO 90X35X500_F	35	500	220	1,0	1,67	1,94	12
SO 90X35X600_S	SO 90X35X600_F	35	600	220	1,0	2,30	2,67	12
SO 90X60X50_S	SO 90X60X50_F	60	50	245	0,8	0,50	0,58	8
SO 90X60X75_S	SO 90X60X75_F	60	75	245	0,8	0,57	0,66	8
SO 90X60X100_S	SO 90X60X100_F	60	100	245	0,8	0,64	0,74	8
SO 90X60X150_S	SO 90X60X150_F	60	150	245	0,8	0,77	0,98	8
SO 90X60X200_S	SO 90X60X200_F	60	200	245	1,0	1,03	1,19	10
SO 90X60X300_S	SO 90X60X300_F	60	300	245	1,0	1,37	1,58	10
SO 90X60X400_S	SO 90X60X400_F	60	400	245	1,0	1,70	1,97	12
SO 90X60X500_S	SO 90X60X500_F	60	500	245	1,0	2,03	2,35	12
SO 90X60X600_S	SO 90X60X600_F	60	600	245	1,2	2,65	3,07	12
SO 90X85X100_S	SO 90X85X100_F	85	100	270	0,8	0,80	0,92	16
SO 90X85X150_S	SO 90X85X150_F	85	150	270	0,8	0,92	1,07	16
SO 90X85X200_S	SO 90X85X200_F	85	200	270	1,0	1,23	1,42	18
SO 90X85X300_S	SO 90X85X300_F	85	300	270	1,0	1,59	1,85	18
SO 90X85X400_S	SO 90X85X400_F	85	400	270	1,0	1,90	2,21	20
SO 90X85X500_S	SO 90X85X500_F	85	500	270	1,0	2,24	2,60	20
SO 90X85X600_S	SO 90X85X600_F	85	600	270	1,2	3,01	3,49	20
SO 90X110X150_S	SO 90X110X150_F	110	150	295	0,8	1,13	1,31	16
SO 90X110X200_S	SO 90X110X200_F	110	200	295	1,0	1,41	1,63	18
SO 90X110X300_S	SO 90X110X300_F	110	300	295	1,0	1,84	2,13	18
SO 90X110X400_S	SO 90X110X400_F	110	400	295	1,0	2,18	2,52	20
SO 90X110X500_S	SO 90X110X500_F	110	500	295	1,0	2,63	3,01	20
SO 90X110X600_S	SO 90X110X600_F	110	600	295	1,2	3,39	3,93	20



product description: The rising elbow is designed for the transition between a horizontal and sloping (vertical) cable tray. The elbow is possible used in combination with cable ladders.

To fix the connection use the bolt NSM 6X10. To protect the cables, the bolt head is inside the cable tray.

A bolt with a GMT surface finish is used for a tray with an F surface finish.

These items can also be ordered in a varnished version.

surface finish: S - Pre-Galvanized, zinc-layer 13 - 27 µm  
 F - Hot Dip Galvanized according to EN ISO 1461, zinc-layer 45 µm (min. 35 µm)

sales amount: á 1 pc

certification: EN 61537:02

storage: EN 60721-3-1

