

Tools and Testers

SECTION CONTENTS

STM-8	12.1 – 12.2
STM-8 Accessories	12.2
Z-TOOL™	12.3
TESTAR®	12.4
S110® Test Adapters	12.4
S110/S210® Multi-Pair Termination Tools	12.5
S814 Impact Tool	12.5
Palm Guard	12.6
CI-KIT	12.6
CI-KIT2	12.6
AllPrep™ Cable Preparation Tool	12.6
TERA® Cable Preparation Tool	12.6
CPT-WEB	12.6

STM-8

The STM-8 is an economical and versatile hand-held tester designed for the testing of UTP and shielded cable for opens, shorts, reversals, miswires, split pairs and cable length. Its rugged, state-of-the-art construction, easy-to-read LCD display and multiple remotes allow one person to quickly test and identify up to four different cable runs from one location.



- 1 Extended Battery Life** – A low battery status indication is provided, as well as automatic shut-off
- 2 Long Length Testing** – Test cable runs up to 900m
- 3 Easy Reference** – Indications for 6- and 8-position jacks
- 4 Line Voltage Indicator** – The presence of line voltage is indicated on the display to help prevent accidental damage to the unit
- 5 Multi-Location Testing** – Additional remotes can be purchased separately
- 6 Universal Compatibility** – The UTP modular cords are equipped with patented “universal” plugs, that fit into any standard 6- or 8-position modular jack

Tests All Wiring Configurations



Tests T568A, T568B, USOC, 10BASE-T, Token Ring, and TP-PMD wiring configurations.

Determines Unknown Wiring



In FIND mode, the STM-8 will detect and identify which wiring scheme is present in the cable being tested.

Determines Cable Length



In the LENGTH mode, the STM-8 will determine the distance measurements on any given cable up to 900m. This feature may be used with all four identifiable remotes.

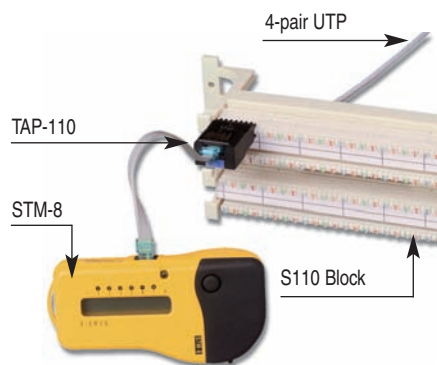
STM-8 AND STM-8-S

Part #	Description
STM-8	UTP (unshielded, twisted-pair) cable tester. Includes carrying case, remote "A", two universal plug-ended modular cords, wiring guide, 9V alkaline battery, instructions, and warranty card
MC-8-005	Universal plug-ended modular replacement cord

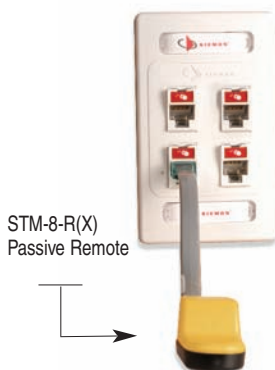


Horizontal Cross-Connect

The S110® Test Adapter can be used to test horizontal cabling that is terminated on 110-type connecting blocks



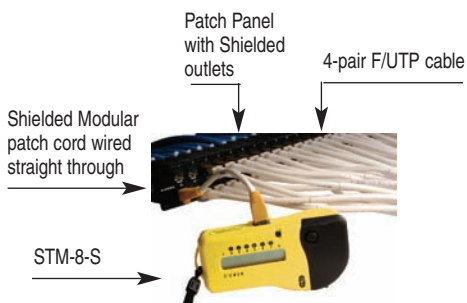
Work Area Outlet



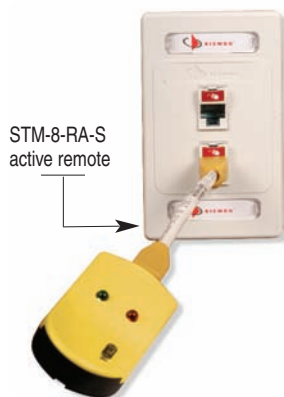
STM-8-S	Shielded twisted-pair cable tester. Includes carrying case, active remote, two screened modular cords, wiring guide, 9V alkaline battery, instructions, and warranty card
MC5-S-8-005	Shielded modular replacement cord



Horizontal Cross-Connect



Work Area Outlet



ACCESSORIES

Siemon's active remote utilises a shielded jack for testing both UTP and shield continuity of F/UTP cabling. LEDs on remote indicate test results after each test cycle; solid green LED flash for pass and solid red LED flash for fail. Identifiable passive remotes are also available for testing multiple locations.

STM8-RA-S
Active remote for UTP or F/UTP with two screened modular cords, instructions, 3V lithium battery, and warranty card



STM8-R(X)
Additional identifiable UTP passive remotes
Use (X) to specify remote identity:
A = remote A,
3 = kit of remotes B, C, and D



Z-Tool™ and Accessories

The Z-TOOL is an integral part of the exclusive Z-MAX™ termination process and is used with both UTP and shielded Z-MAX modules. This easy-to-use and ergonomic designed tool is used both to secure the cable retention/grounding clip and to fully engage the termination module into the back of the outlet.



- 1 Ergonomic** – Minimal hand strain, limited pressure and zero-impact for comfortable repeatability
- 2 Alignment Aids** – Keyed guide ensures correct outlet insertion during termination
- 3 One-Handed Activation** – Allows final Z-MAX termination step to be accomplished with one hand for operation space-restricted areas
- 4 Retention Clip Locking** – Additional function closes and locks hinged cable retention/grounding clip
- 5 Slim Profile** – To fit in a pocket or toolbox
- 6 Attachment Point** – For key ring or lanyard and rack-mount capability

Part #	Description
Z-TOOL	Z-MAX Termination Tool
CPT-RGTP	AllPrep™ cable preparation tool for twisted pair cables
CPT-DIE-TP	Replacement All-Prep Category 6 die



Z-MAX ICON CARDS

The innovative Z-MAX icon card contains four high-visibility print, 2-sided icons to provide a variety of options for outlet identification and supplemental colour coding. The icons are secured in a durable frame to eliminate loose and easily lost parts.

All Cards Include:

- Red and blue icons with voice and data symbols
- Supplemental/colour-matched icon with voice, data, and blank designation
- 1 white blank icon for field designation
- Fully recyclable material

Z-ICON-(XX)B..... Z-MAX Icon Card, bag of 100

Primary Colour

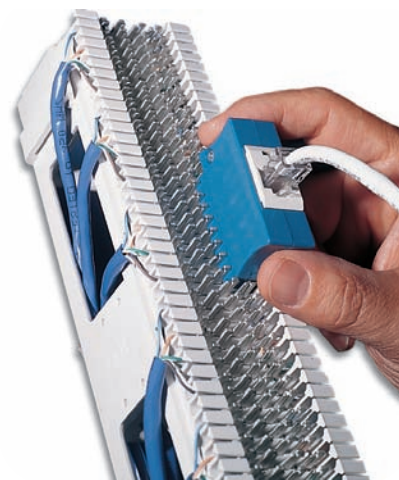
- | | | | | |
|------------|-----------|-------------|-------------|------------------|
| 01 = Black | 03 = Red | 05 = Yellow | 07 = Green | 20 = Ivory |
| 02 = White | 04 = Grey | 06 = Blue | 09 = Orange | 80 = Light Ivory |



TESTAR®

The TESTAR creates easy test access to 66 quick clips. It plugs directly onto the S66 block, establishing a positive connection and providing a 4-pair modular jack for plugging in test equipment. The body is molded in blue plastic and has molded-in finger grips for easy handling.

Part #	Description
TESTAR-8T-C5	Category 5e compatible, 4-pair, 8-position, TESTAR, T568A
TESTAR-8A-C5	Category 5e compatible, 4-pair, 8-position, TESTAR, T568B



OTHER TESTARS

The positive connection made by the TESTAR eliminates possible problems associated with handling alligator clips or test probes such as accidental shorting across terminals or intermittent test connections. Test equipment is inserted into the TESTAR through a 1-, 2-, 3-, or 4-pair modular jack. To utilise equipment requiring alligator clips, our MODAPT® adapter can be plugged into the TESTAR.

Part #	Description
TESTAR-2	1-pair, 6-position, TESTAR, USOC
TESTAR-4	2-pair, 6-position, TESTAR, USOC
TESTAR-6	3-pair, 6-position, TESTAR, USOC
TESTAR-8R1	4-pair, 8-position, TESTAR, USOC
TESTAR-8	4-pair, 8-position, TESTAR, T568B
TESTAR-8T	4-pair, 8-position, TESTAR, T568A

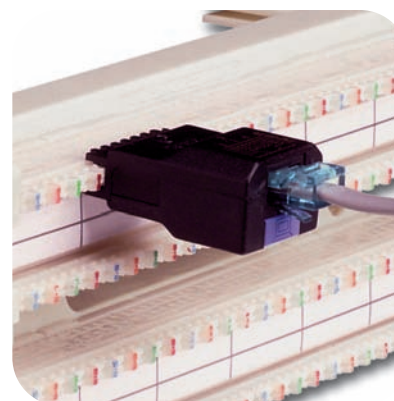


S110® TEST ADAPTERS

Siemon's 1-, 2-, 3-, and 4-pair S110 test adapters provide a convenient way to test 110-type connecting blocks. These adapters plug directly onto any 110-type connecting block and provide a modular jack for connection to test equipment or patch cords. It is the only 110 style test adapter that can be attached to both terminated and unterminated 110-type connecting blocks. The 2-, 3-, and 4-pair adapters are end-stackable, and are polarised to prevent incorrect insertion.

The 4-pair test adapters have an area for a coloured icon (a blue and red icon are included) for additional identification. The 4-pair adapter is available in T568A and T568B wiring configurations and is category 5e compatible for high-performance link testing.

Part #	Description
TAP-110-T4	Category 5e compatible, 4-pair, 8-position, test adapter, T568A
TAP-110-A4	Category 5e compatible, 4-pair, 8-position, test adapter, T568B



4-pair

Technical Tip!

The adapters utilise a unique, spring-loaded contact design to ensure a reliable connection without disturbing existing cross-connect terminations. This also extends the life-cycle of the test adapter.

S110®/S210® MULTI-PAIR TERMINATION TOOLS



S788J4-210
4-pair S210 termination tool



S788J4B-210
4-pair S210 replacement cutting blade and insertion assembly



S788J4H-210
4-pair S210 replacement head for impact tool, including housing, cutting blade and insertion assembly



S788J4
4-pair S110 termination tool



S788J4B
4-pair S110 replacement cutting blade and insertion assembly



S788J4H
4-pair S110 replacement head for impact tool, including housing, cutting blade and insertion assembly



S788J5
5-pair S110 termination tool



S788J5B
5-pair S110 replacement cutting blade and insertion assembly



S788J5H
5-pair S110 replacement head for impact tool, including housing, cutting blade and insertion assembly

S814 IMPACT TOOL

The S814 impact tool terminates wires on 66 and 110 clips. The tool is spring-loaded and fully adjustable; a helpful feature when working with wires of varying thicknesses. The bayonet-style mount allows the blades to be changed quickly and easily, and a compartment in the handle stores an extra blade.

Part #	Description
S814	Tool body only
S814-66	Tool body with 66 termination blade
S814-110	Tool body with 110 termination blade
S81401-66	66 termination blade
S81401-110-88	110 termination blade



Technical Tip!

Termination blades for Siemon punch down tools are reversible — one end terminates and cuts off the excess wire, the other end terminates without cutting.

PALM GUARD

The Siemon palm guard has been ergonomically designed to provide a safe and convenient means of terminating our UTP and shielded flat or angled CT couplers and MAX® modules. The palm guard absorbs the impact of termination while securing the connector to prevent movement. Includes an adjustable elastic strap and a removable insert, which can be used to hold MAX modules while terminating on flat surfaces.



Part #	Description
PG	Palm guard with MAX insert

CI-KIT

The CI-KIT provides all the tools that a telecommunications technician needs for day-to-day activities. Included in the kit is an S814 impact tool with 66 and 110 termination blades, a probe pic, electrician's scissors, mini flathead screwdriver, and a CPT-WEB cable preparation tool. These tools are stored in a handy, lightweight clip-on pouch which allows the installer to cut, strip, and terminate cabling without having to carry separate tools or larger tool kits.



Part #	Description
CI-KIT	Clip-on tool kit with S814 impact tool (with 66 and 110 termination blades), probe pic, electrician's scissors, mini flathead screwdriver, and CPT-WEB tool
CI-POUCH	Clip-on CI-KIT tool pouch only

CI-KIT2

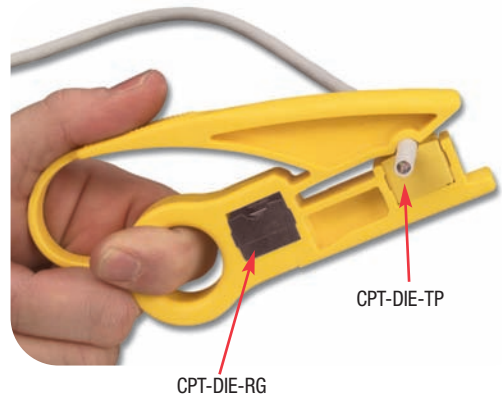
Siemon's CI-KIT2 includes all the components of the standard CI-KIT, with the addition of our popular AllPrep™ cable preparation tool (see page 13.7) in place of the CPT-WEB tool. Also, a "D-Ring" has been added to carry additional tools. These tools are stored in a handy, lightweight, clip-on pouch which allows the installer to cut, strip and terminate cabling without having to carry separate tools or larger tool kits.



Part #	Description
CI-KIT2	Clip-on tool kit with S814 impact tool, (with 66 and 110 termination blades), probe pic, electrician's scissors, mini flathead screwdriver, and AllPrep cable preparation tool
CI-POUCH2	Clip-on CI-KIT2 tool pouch only

ALLPREP™ CABLE PREPARATION TOOL

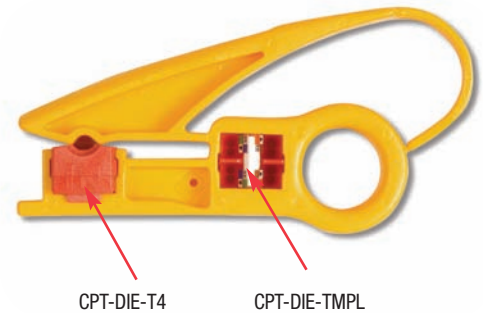
The AllPrep cable preparation tool provides a robust and reliable method of preparing both coaxial and twisted-pair cable for termination. The tool features two colour-coded dies that are interchangeable for each media type. The coaxial die strips RG59 and RG6 coaxial cable and the twisted-pair die strips a wide variety of UTP, shielded and fibre cables.



Part #	Description
CPT-RGTP	AllPrep cable preparation tool for coax/twisted pair cables
CPT-DIE-RG	Replacement coax die (black)
CPT-DIE-TP	Replacement twisted-pair die (yellow)

TERA® CABLE PREPARATION TOOL

The TERA cable preparation tool uses a patent pending process to significantly reduce the time required to prepare fully shielded (S/FTP) cable. The tool includes an insert die with a blade, which is specifically designed to accurately strip the jacket and foil from 4-pair fully shielded cable without damaging the conductors. A template is also included to pre-align cable pairs and ensure proper pair positioning during termination.



Part #	Description
CPT-T	TERA preparation tool. Includes CPT-DIE-T4 and TERA cable preparation template
CPT-DIE-T4	Replacement TERA cable die (red)
CPT-DIE-TMPL	Replacement TERA wiring guide

CPT

The CPT provides a simple and effective method to remove the outer cable jacket from 2-, 3-, or 4-pair cables without damaging the inner conductor insulation. The CPT is recommended for use with any round cable with an exterior diameter from 2.54 – 6.35mm and an outer jacket thickness from 0.380 – 0.635mm.



Part #	Description
CPT	Cable preparation tool

CPT-WEB

The CPT-WEB is designed to easily strip the outer cable jacket, flatten and separate the webbed conductors of Siemon's category 5e cross-connect jumper wire and other UTP cable with webbed conductor pairs.



Part #	Description
CPT-WEB	Webbed cable preparation tool