

Fibre Enclosures and Splicing

Siemon's fibre enclosures provide feature-rich and easily implemented options for managing critical fibre connectivity. With versions supporting up to 288 fibre ports, Siemon's Rack Mount Interconnect Centers (RIC 3) offer superior density, accessibility, slack management, security and port identification.

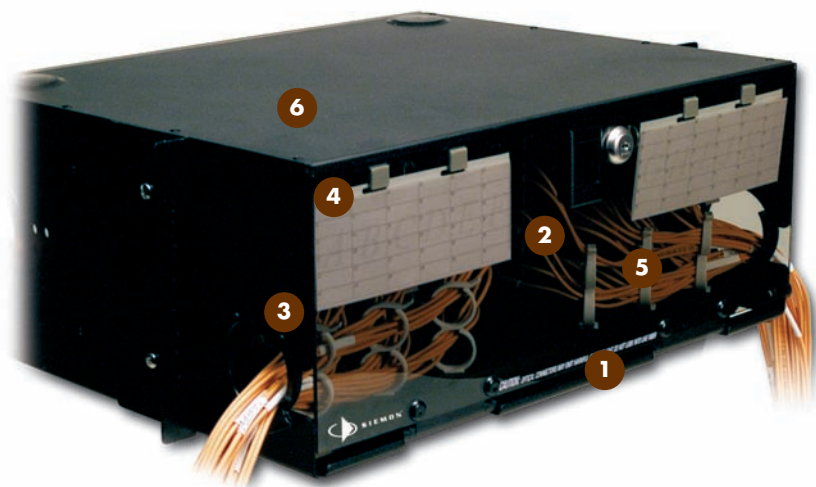
Wall mount versions, which share many of the RIC3's user-friendly features, are also available.

SECTION CONTENTS

Rack Mount Interconnect Centre	7.1 – 7.2
Wall Mount Interconnect Centre	7.3 – 7.4
Mini Wall Mount Interconnect Centre	7.4
Fibre Connect Panel	7.5 – 7.6
Compression Fittings	7.6
Splice Trays	7.6
Flat Quick-Pack™ Adapter Plates	7.7
FCP3-R Bulkhead Panel	7.7
FCP3D Pre-loaded Sliding Panel	7.7

Rack Mount Interconnect Centre (RIC3)

The RIC3 provides the best overall value for exceptional fibre management. The RIC3 enclosure offers superior fibre density (up to 288 fibres in just 4U) without sacrificing fibre protection and accessibility. Features include a fully removable tray, improved labeling, standard front and rear door locks, and single-finger door latches. With superior cable management, port identification, fibre accessibility and security, the RIC3 is the best way to protect mission critical fibre connections.



- 1 Quick-Release Hinges** – Spring loaded quick-release hinges enable easy removal of front and rear doors for complete access to fibre connections
- 2 Enhanced Labeling** – Label virtually any port configuration with our hinged labels. The labels hang on the front door for improved visibility. When the door is opened, labels flip down allowing ready viewing of the label and corresponding ports
- 3 Rotating Grommets** – Patented rotating grommets facilitate loading and retention of jumpers and fibre while minimising microbending stress when using the sliding tray
- 4 Complete Access** – Management tray has a positive stop in both front and rear working positions providing complete access for moving, adding, changing, or cleaning of fibre connections
- 5 Maximum Capacity** – The RIC3 enables a maximum amount of fibres to be patched or patched and spliced in a 2, 3, and 4U enclosure without compromising accessibility. This allows more efficient utilisation of rack space
- 6 Superior Design** – Top and bottom access holes located at the rear of the enclosure allow fibres to be routed between tandem enclosures without having to run fibres outside of the enclosure



Removable Tray

The RIC3 cable management tray is fixed in place, but can be removed from the front or rear of the enclosure and moved to a work table for more convenient loading.



Latching and Locking

The RIC3 features a single-finger latch on both front and rear doors. Front and rear doors include a lock for added security



Quick-Pack™ Adapter Plates

Siemon Quick-Pack adapter plates can be inserted or removed with a single-finger latch for quick and easy access to fibre connections.

RACK MOUNT INTERCONNECT CENTRE (RIC3)

Siemon RIC3 enclosures are designed for enhanced fibre management and ease of use. They are compatible with an array of Siemon fibre Quick-Pack™ adapter plates for your choice of fibre adapters and port density (see page 7.8).



Part #
RIC3-24-01 24- to 96-port Rack Mount Interconnect Centre, accepts (4) Quick-Pack adapter plates, 2U, black

height: 86.6mm, width: 432mm, depth: 380mm



Part #
RIC3-36-01 36- to 144-port Rack Mount Interconnect Centre, accepts (6) Quick-Pack adapter plates, 2U, black

height: 86.6mm, width: 432mm, depth: 380mm



RIC3-48-01 48- to 192-port Rack Mount Interconnect Centre, accepts (8) Quick-Pack adapter plates, 3U, black

height: 133mm, width: 432mm, depth: 380mm



RIC3-72-01 72- to 288-port Rack Mount Interconnect Centre, accepts (12) Quick-Pack adapter plates, 4U, black

height: 178mm, width: 432mm, depth: 380mm

Note: 1U = 44.5mm

Note: All RIC products include laser-printable labels*, cable ties, rack-mounting hardware, and pre-installed fibre management clips.

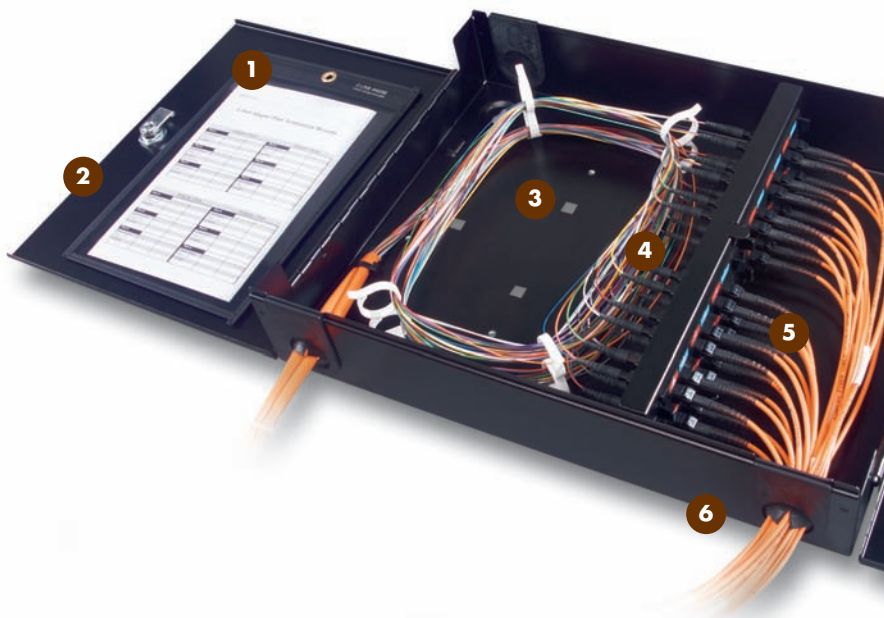
*Visit www.siemon.com for labeling software.

MAXIMUM RIC3 FIBRE CAPACITY					
# FIBRES PER QUICK-PACK	ADAPTER OPTIONS	RIC24	RIC36	RIC48	RIC72
6	ST, SC	24	36	48	72
8	ST, SC	32	48	64	96
12	ST, SC	48	72	96	144
16	LC	64	96	128	192
24	LC	96	144	192	288

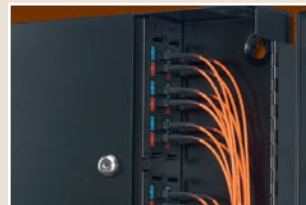
MAXIMUM SPLICING CAPACITY				
SPLICE TYPE	RIC24	RIC36	RIC48	RIC72
Fusion	96	96	96	144

Wall Mount Interconnect Centre (SWIC3)

The Wall Mount Interconnect Center (SWIC3) is a cost-effective fibre enclosure designed to manage and protect up to 96 fibre connections. The low-profile, compact design makes it ideal for telecommunications rooms or other installation areas where wall space is a premium. The adapter mounting method is standardised on the same snap-in Quick-Pack™ adapter plates used in our family of Rack Mount Interconnect Centres (RIC3).



- 1 Convenient Labeling** – Convenient labeling system includes removable clear label holders for storing and protecting fibre documentation
- 2 Door Options** – Doors on enclosure and jumper guard can be ordered with independent key lock or latching options
- 3 Optional Splice Tray Bracket** – Optional bracket available for mounting multiple splice trays *(not shown)*
- 4 Available with Quick-Pack Adapter Plates** – Quick-Pack adapter plates are available with SC, ST, or LC adapters
- 5 Fibre Jumper Guard** – Integrated hinged fibre guard provides jumper protection and management
- 6 Accessories** – Dust-proofing grommets included



Easy Access

Doors on enclosures and jumper guard swing open a full 180° to provide complete front and side access.



Dual-Level Fibre Managers

Incorporates two independent levels of storage to enable the fibre to be routed at levels that correspond to the adapters.



Snap-In Adapter Plates

Utilises same Quick-Pack adapter plates as RIC3 enclosures with integrated latches for snap-in installation and single-finger removal.

MAXIMUM SWIC3 FIBRE CAPACITY			
# FIBRES PER QUICK-PACK	ADAPTER OPTIONS	SWIC3-M	SWIC3
6	ST, SC	12	24
8	ST, SC	16	32
12	ST, SC	24	48
16	LC	32	64
24	LC	48	96

MAXIMUM SPLICING CAPACITY		
SPLICE TYPE	SWIC3-M	SWIC3
Fusion	N/A*	48

*SWIC3-M does not accept splice trays

WALL MOUNT INTERCONNECT CENTRE (SWIC3)

Part #	Description
SWIC3-(X)-01	24- to 96-port Wall Mount Interconnect Centre, black. Includes dual-level fibre managers, port designation labels and removable pocket, dust-proofing grommets, strain relief hardware, cable ties, and mounting hardware. <i>height: 311mm, width: 311mm, depth: 82.6mm</i>

*Use (X) to specify the type of lock on the enclosure:
A = key lock, C = thumb-turn latch*

Part #	Description
SWIC3G-(X)(X)-01	24- to 96-port Wall Mount Interconnect Centre with integrated jumper guard, accepts (4) Quick-Pack adapter plates, black. Includes dual-level fibre managers, port designation labels and removable pocket, dust-proofing grommets, strain relief hardware, cable ties, and mounting hardware. <i>height: 311mm, width: 406mm, depth: 82.6mm</i>

*Use 1st (X) to specify type of lock on the enclosure (left) door:
A = key lock, C = thumb-turn latch
Use 2nd (X) to specify type of lock on the guard (right) door:
A = key lock, C = thumb-turn latch*

Part #	Description
TRAY-B-01	Bracket for mounting up to 4 mini splice trays to SWIC3 base



MINI WALL MOUNT INTERCONNECT CENTRE

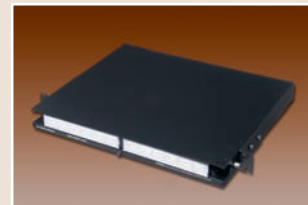
The SWIC3 enables the economical interconnection of fibre in locations where wall space is limited while still providing many of the popular, installer-friendly features of the SWIC3. By accepting two flat Quick-Pack adapter plates, the SWIC3 can accommodate from 12-48 fibres. Also included are dust-proofing grommets to provide protection from contaminants and bend radius guides to ensure proper storage of fibre slack.

Part #	Description
SWIC3-M-01	12- to 48-port Mini Wall Mount Interconnect Centre, accepts (2) Quick-Pack adapter plates, black. <i>height: 218.4mm, width: 185.4mm, depth: 82.6mm</i>



Fibre Connect Panel (FCP3)

Siemon's popular Fibre Connect Panels (FCP3-DWR and FCP3-RACK) economically connect, protect, and manage up to 72 fibres/1U. It accepts Siemon's Quick-Pack™ adapter plates with patented single-finger access. The FCP3-DWR makes access to the connections easy via a fixed tray that can be released and slid out of the front or rear of the enclosure.



High Density

FCP3 enclosures accommodate up to 72 fibres in only 1U on a 19 inch rack.



Sliding Tray

The FCP3-DWR (drawer version) features a tray that slides out from the front or rear, providing easy access to fibre connections. The entire tray can be removed and placed on a work table for more convenient termination.

- 1 Lanced Tabs** – Provide convenient cable anchor points for incoming jacketed fibre cable
- 2 Front Fibre Clips** – Manage up to 36 duplex fibre jumpers (72 fibres total)
- 3 Label Holder** – Protects fibre jumpers and is readily removable via release of factory-installed snap-latches
- 4 Up to 3 Optional Splice Trays** – Can be mounted to manage and protect either mechanical or fusion splices
- 5 Rear Fibre Clips** – Manage cable slack while maintaining minimum bend radius requirements

MAXIMUM FCP3 FIBRE CAPACITY		
# FIBRES PER QUICK-PACK	ADAPTER OPTIONS	FCP3
6	ST, SC	18
8	ST, SC	24
12	ST, SC, LC	36
16	LC	48
24	LC	72

MAXIMUM SPLICING CAPACITY	
SPLICE TYPE	FCP3
Fusion	72

FIBRE CONNECT PANEL (FCP3)

Part #	Description
FCP3-DWR	6- to 72-port Fibre Connect Panel with sliding tray, accepts (3) Quick-Pack™ adapter plates, 1U, black. Includes mounting brackets, housing/tray, fibre managers, grommets, label holders, and labels <i>height: 43.2mm</i> <i>width: 482.6mm</i> <i>depth: 355.6mm</i>
FCP3-RACK	6- to 72-port Fibre Connect Panel with fixed tray, accepts (3) Quick-Pack adapter plates, 1U, black. Includes mounting brackets, housing/cover, fibre managers and grommet <i>height: 43.2mm</i> <i>width: 482.6mm</i> <i>depth: 241.3mm</i>

Note: 1U = 44.5 mm



FCP3-DWR



FCP3-RACK

COMPRESSION FITTINGS

Compression fittings are utilised as an enhanced method for securing cables to FCP3 fibre enclosures. Acme threads on the body prevent skipping, allowing for faster installations of lock-nuts.

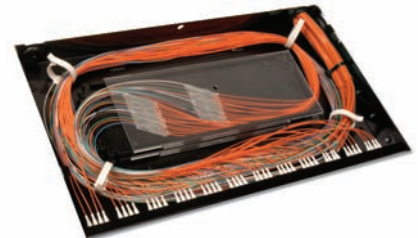
Part #	Description
CF-(XX)	Compression fitting

Use (XX) to specify fibre diameter:
 40 = 5.8 – 13.9mm,
 51 = 11.4 – 18.0mm,
 60 = 15.0 – 25.4mm



SPLICE TRAYS (XGLO® AND LIGHTSYSTEM®)

These aluminum trays come with a clear, snap-on polycarbonate cover and can be stacked for high-density applications. The standard tray holds up to 24 splices. The mini-tray for use with the SWIC3, accommodates up to 12 splices.



Part #	Description
TRAY-3	Standard splice tray for up to 24 fusion splices with sleeve protection. For use with RIC3 and FCP3 fibre enclosures
TRAY-M-3	Mini splice tray for up to 12 fusion splices with sleeve protection. For use with SWIC3 enclosures



TRAY-3



TRAY-M-3

Standard Tray Dimensions

height: 103mm,
width: 298mm,
depth: 8.13mm

Mini Tray Dimensions

height: 103mm,
width: 179mm,
depth: 8.13mm

FIBRE CONNECT PANEL (FCP3-R)

The Fibre Connect Panel is a rack-mounted fibre enclosure that can be fitted with hard-mount adapters. It is designed to connect, protect and manage up to 48 fibres in a low profile 1 U rack space. The FCP3-R can be supplied empty (FCP3-R-01) or fully-loaded - and populated to provide terminations for 24 fibres in SC and 48 fibres in the LC version.

Ordering Information

Part #	Description
FCP3-R-01	Fixed patch panel, 1U, C/W 12 blanks, Fibre management, Black
FA2-SCSC-01	Fibre adapter, SC Duplex, MM or SM, PB**
FA4-LCLC-06	Fibre adapter, LC Quad, SM, PB Sleeve, Blue**
FA4-LCLC-80	Fibre adapter, LC Quad, MM, PB Sleeve, Beige**
FA-BLANK	Fibre adapter Blank, Black**

**Add "B" for bulk pack of 48

FCP3-R-SC24-01	24-port Fibre Connect Panel, fixed, duplex SC 1U, black
FCP3-R-LC48-01	48-port Fibre Connect Panel, fixed, quad LC 1U, black

height: 43.2mm
width: 482.6mm
depth: 355.6mm



FCP3-R-01 with 6 x Quad LC adapters



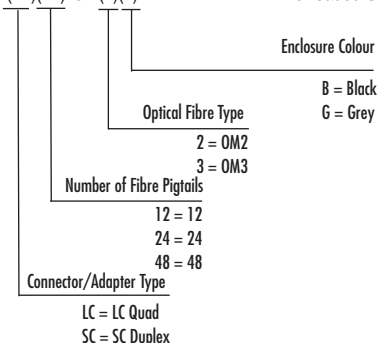
FCP3-R-01 with Quad LC adapters

PRE-LOADED SLIDING FIBRE PANEL (FCP3D)

The FCP3D is a rack-mounted, sliding fibre enclosure, supplied pre-fitted with hard-mount adapters, pre-stripped pigtailed and splice trays. It is designed to connect, protect and manage up to 48 fibres in a low profile 1U of rack space. Pigtailed are colour-coded, pre-stripped to 250 microns and loomed into splice trays (12 fibres per tray). Splice trays are fitted with clips designed to hold crimp-style splice protectors.

Ordering Information - see matrix below:

FCP3D-(XX)(XX)-OM(X)(X).....Pre-loaded Sliding Patch panel, 1U



FCP3D-LC24-OM3G



FCP3D with Quad LC adapters

HEAT SHRINK SLEEVES

Heat shrink sleeves provide a safe and efficient method for protecting fusion splices on either 250 or 900 micron coated fibres. Heat shrink sleeves are threaded on to fibres prior to fusion splicing and then positioned directly over splice and heated via an oven or heat gun.*

Part #	Description
HT-40	40mm heat shrink sleeve
HT-60	60mm heat shrink sleeve



*Heating times may vary depending on heat source.

QUICK-PACK™ ADAPTER PLATES

Siemon's patented Quick-Pack adapter plates feature an integrated latch, which provides single-finger access to fibre even in fully populated enclosures.

XGLO® & LIGHTSYSTEM®

RIC-F-SC6-01
3 duplex SC adapters
(6 fibres)



RIC-F-SC8-01
4 duplex SC adapters
(8 fibres)



RIC-F-SC12-01
6 duplex SC adapters
(12 fibres)



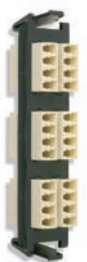
RIC-F-LC12-01
6 duplex LC adapters
(12 fibres), beige adapters



RIC-F-LC16-01
4 quad LC adapters
(16 fibres), beige adapters



RIC-F-LC24-01
6 quad LC adapters
(24 fibres), beige adapters



RIC-F-LCU12-01
6 duplex LC adapters
(12 fibres), blue adapters
(not shown)



RIC-F-LCU16-01
4 quad LC adapters
(16 fibres), blue adapters
(not shown)



RIC-F-LCU24-01
6 quad LC adapters
(24 fibres), blue adapters
(not shown)



LIGHTSYSTEM

RIC-F-SA6-01
3 duplex ST adapters
(6 fibres)



RIC-F-SA8-01
4 duplex ST adapters
(8 fibres)



RIC-F-SA12-01
6 duplex ST adapters
(12 fibres)
Only recommended for push-pull ST connectors due to access constraints



RIC-F-BLNK-01
Blank adapter plate



Each adapter plate with icon pockets includes red, blue, black, and clear icons with paper labels. All SC and ST adapters are "universal" to support multimode and singlemode.